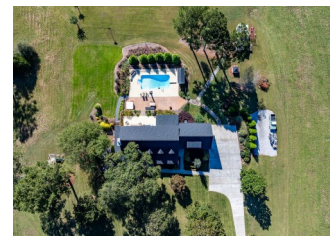


1480 Bradley Gin Rd



Offered for \$1,375,000



8.6 Acres | 1480 Bradley Gin Road | Monroe, GA | 30656

Some homes are best defined by how they make you feel, and here, it starts on the front porch. Stretching across the front of the home, this expansive porch is designed to be lived on. With a porch swing, multiple seating areas, and views over beautiful open pasture, this is the kind of space where mornings begin slowly and evenings end out back by the pool, watching the sun set over the surrounding acreage. Inside the front door, a wide and welcoming foyer sets the tone. To one side, a main-level bedroom and full bath offer flexibility for guests or everyday convenience. The pool is set within thoughtfully designed landscaping and stamped concrete, complemented by a powered awning that extends the usability and comfort of the backyard space. A brand new vinyl liner ensures it's ready to enjoy, while the surrounding 8.644 acres of open pasture create a backdrop that is both expansive and peaceful. From the front porch to the kitchen views to the backyard setting, this home offers a lifestyle centered around space, flexibility, and connection to the beautiful, green pastures and wide-open spaces. Visit our site for full description.

Travis Ebbert

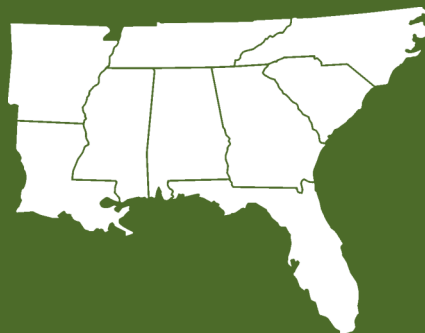
Listing Agent

1551 Jennings Mill Rd. Suite 1400A
Watkinsville, GA 30677

Phone: 706.549.5050

Mobile: 706.614.8840

Fax: 706.549.8909



**Southern
Land Exchange**