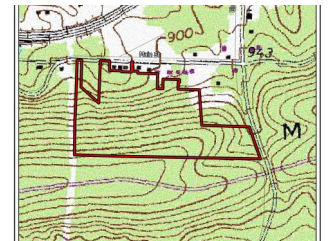
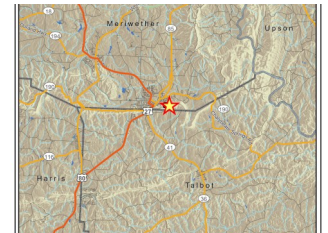
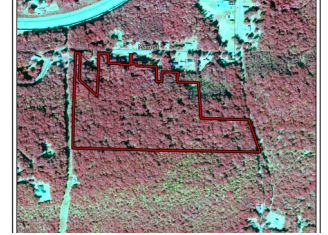


Elm Street Manchester



Offered for \$ 150,000

+/- 25.48 Acres | 380 Elm Street | Meriwether County, GA | 31816

Amazing Recreational Timber Tract in Manchester. Approximately 25.48 +/- acres located just minutes from charming downtown Manchester. This hidden gem is a great recreational tract today and the country homesite of tomorrow. It features road frontage on both Elm Street and E Main Street and has multiple building sites with great views. This quiet hamlet of Manchester provides the perfect place to build a new home in the heart of the south Georgia charm. Schedule your exclusive tour of this rare tract today with Land Specialist David Smith, Southern Land Exchange (770) 842-6600.

David T. Smith, "Smitty"

Land Specialist

1551 Jennings Mill Rd. Suite 1400A

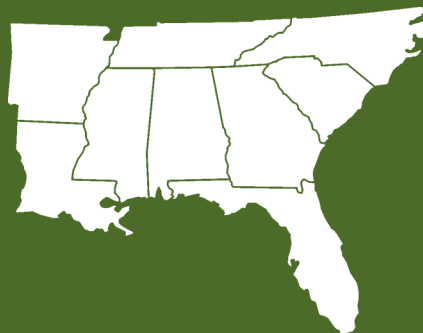
Phone: 706.549.5050

Mobile: 770.842.6600

Fax: 706.549.8909

Email:

dsmith@southernlandexchange.com



**Southern
Land Exchange**