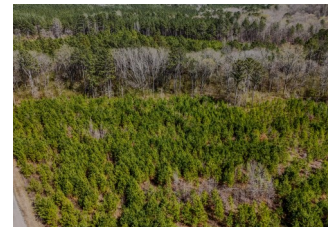


Vanns Creek Lot 12



Offered for \$6,950 / Acre



+/- 15 Acres | Halls Valley Road | Floyd County, GA | 30165

This private piece sits on the south side of Bogan Mountain, near the Alabama line. These lots sit off a gravel county road and have young, planted pines making it simple to create your dream country home! On the south side of the property runs Vann's Creek, a seasonal, manmade drainage ditch, funnels the runoff out of the valley. The creek winds through a beautiful old growth hardwood stand. The southern boundary line is near the top of Carr Mountain, making for a stunning natural boundary. Subsoil gas and oil rights are reserved. See attached pdf for Mineral Language.

Ben Chaffin

Listing Agent

1551 Jennings Mill Rd. Suite 1400A

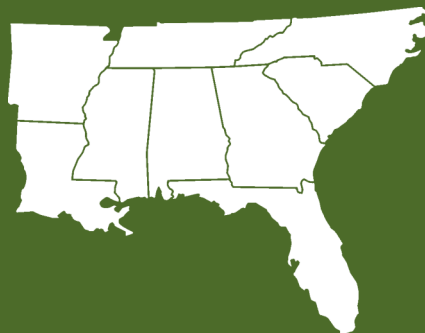
Watkinsville, GA 30677

Phone: 706.549.5050

Mobile: 706.331.4579

Fax: 706.549.8909

Email: bchaffin@southernlandexchange.com



**Southern
Land Exchange**